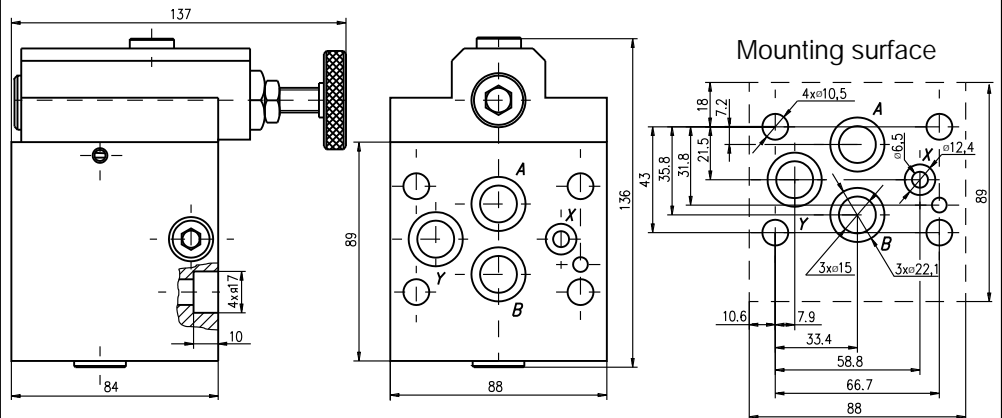


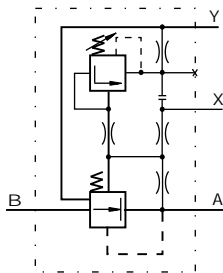
DESCRIPTION

- ✓ Pressure reducing valves for plate mounting-KRT10P/...
- ✓ The pressure reducing valves are used to limit the pressure in the separate sections of the hydraulic systems where constant pressure is achieved (at element outlet) lower than the inlet pressure and independent of its changing.

DIMENSIONS



SYMBOL



KRT10P/...

ORDERING CODE

KRT 10 P / ...

Pressure reducing valve

Nominal bore 10mm.

Plate mounting

Rated pressure: up to 100 bar.-10
up to 200 bar.-20
up to 320 bar.-32

TECHNICAL DATA

Weight	5,470 kg	
Max. Pressure	320 bar	
Rated flow (Dp=2,5 bar.)	60 l/min	
Adjustment of pressure reducing range:		
KRT10P/10	Pr(A>Y)	12...100
	Pr(B>A)	8...100
KRT10P/20	Pr(A>Y)	15...200
	Pr(B>A)	8...200
KRT10P/32	Pr(A>Y)	18...320
	Pr(B>A)	8...320
Working liquid-hydraulic oils with characteristics:		
-viscosity	10...400 cSt	
-degree of filtration	0,025 mm	
-temperature	-20... +80°C	